

SCHOOL PROFILE



2021-2022



Nakornpayap
International School

Table of Contents

- 01** Introduction to NIS
- 02** School Accreditation
- 03** Principal's Welcome
- 04** Philosophy, Vision, Mission, ESL0s
- 05** Academic Programs
- 06** Student Assessment Data
- 07** Advanced Placement (AP) Data
- 08** SAT Data (Scholastic Aptitude Test)
- 09** NIS Graduates

Introduction

'Education Through Diversity'

NIS is a privately owned Kindergarten-Grade 12 international school located in Chiang Mai, Thailand, and trusted by parents for over 25 years. The school is college-preparatory, offering an internationally-accredited curriculum for Early Learners through Grade 12. The school adheres to US Common-Core Curriculum Standards in the core subjects of English Language Arts and Mathematics, and a variety of leading international curriculum standards in other subject areas. All classes are taught in English, with equal emphasis on academic and personal development. The student demographic is predominantly a mixture of Asian nationalities (Thai, Korean, Chinese, and Japanese). The current enrollment is just over 400 students with over 20 nationalities represented in total. There is a full-time teaching faculty of 69 full-time staff.

School Accreditation

NIS has been fully accredited by the Western Association of Schools and Colleges (WASC) since 2001, the Office for National Education Standards and Quality Assessment (ONESQA), and licensed by the Thai Ministry of Education.

Administration & Ownership

Nakornpayap International School (NIS) is governed by an 8-member school Governing Board. Governing Board members are responsible for approving the strategic direction of the school. This task is delegated to the Administration Team who are supported by the Governing Board.

Governing Board

Dr. Pisarn Soydhurum – Board Chairman
Ms. Aree Phongchaichok – Board Honorary Advisor
Ms. Narvinder Ahuja – Director & Licensee Designee
Mr. Benjamin Devere White – Board Member (Principal)
Ms. Sakaewan Muangsaen – Board Member (School Manager)
Ms. Melody Chu – Board Member (Parent Representative)
Mr. Nathan Zhang – Board Member (Parent Representative)
Mr. Kevin Bradley – Board Member (Teacher Representative)

Administration Team

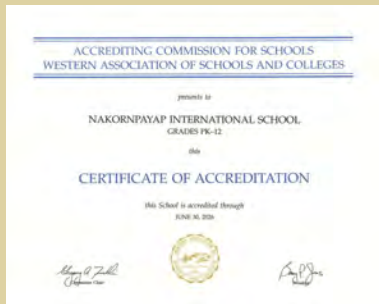
Ms. Narvinder Ahuja, Director
Mr. Benjamin Devere White, Principal
Ms. Sakaewan Muangsaen, Manager
Ms. Carole Ketnourath, College Counselor & Activities Director

Guidance, Counseling, & Academic Coordination

Ms. Carole Ketnourath, College Counselor & Activities Director
Mr. Michael Oakley, Grade 12 College Prep & High School Academic Coordinator
Ms. Anzie Yangmi, Grade 11 College Prep & Dean of Students
Mr. Thom Maneechote, Registrar & Exam Coordinator (PSAT, SAT, AP)
Mr. Paul Kleinschmidt, Middle School Academic Coordinator
Ms. Jordan Weight, Data Analysis & Learning Support Specialist
Mr. Kevin Bradley, WASC Coordinator

School Accreditation

Accreditations assure our NIS community that the school's purposes are appropriate and being accomplished through a viable educational program and that it is a trustworthy institution for student learning. They validate the integrity of NIS's program and transcripts.



Western Association of Schools and Colleges (WASC)

NIS has been fully accredited by the Western Association of Schools and Colleges (WASC) since 2001. Accreditation from WASC brought NIS alongside top schools in the USA and other quality schools around the globe.



ISAT and EARCOS

Membership with ISAT and EARCOS gives NIS administrators and teachers opportunities to meet and share experiences with educators from around the world.



ONESQA

NIS has been also accredited by the Office for National Education Standards and Quality Assessment (ONESQA), and licensed by the Thai Ministry of Education.

NIS is an excellent learning environment for all students!

Principal's Welcome

Welcome to the 2021-2022 school year at Nakornpayap International School – our 28th year of providing academic excellence to the Chiang Mai community. NIS has developed this *School Profile* to provide you with information about our school structure, its programs, student success, and the destination of our graduates.

NIS has offered a Western educational model since 1993 and is the oldest secular international school in Chiang Mai. The school is accredited by the Western Association of Schools and Colleges (WASC). This endorsement validates NIS as a trustworthy institution of learning, confirming the integrity of the school's programs and transcripts. As a result, students who graduate from NIS are eligible to pursue their studies at prominent universities all over the world.

NIS embraces the concepts of global responsibility and social inclusiveness and is a remarkable place to learn. Our commitment is to provide a safe, positive, and intellectual learning environment that will empower students to become creative problem solvers, critical thinkers, and inspired learners prepared for high school, college, and life in the twenty-first century. The curriculum is aligned with the American Common Core Standards and Educational Frameworks, with a variety of rigorous Advanced Placement (AP) courses that allow students to develop their interests right up until their successful application to college.

At the heart of every great school is an exceptional faculty committed to guiding students as they explore their potential in a broad range of settings. We offer an education grounded in creative and critical thinking, and relevant to modern-day global challenges. The faculty along with the support of our parents and the community have worked hard to develop a successful partnership, which is dedicated to immersing students in a rigorous curriculum.

By enrolling your child at NIS, you can be assured of the quality of the academic and co-curricular programs that will provide a comprehensive education for your student.



Mr. Benjamin Devere White (Mr. Ben)
Principal



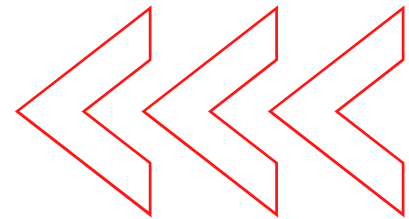
PHILOSOPHY

NIS provides a multicultural setting where students are provided the opportunity to acquire a globally-recognized and well-rounded education. The school strives to develop knowledgeable, confident, collaborative, creative, engaged, and responsible world citizens. Not only does the school stress the development of the individual, but we also emphasize the importance of living meaningfully and effectively in a larger society and world.

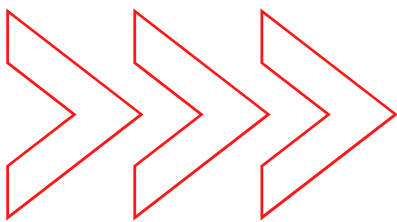
NIS believes that not all learning takes place in the classroom. The school, therefore, offers a strong program of extracurricular activities and sports where students can fully develop individual potential along with leadership skills and self-esteem. As education is an ongoing process, students are encouraged to become lifelong learners prepared to meet ever-changing future challenges.

Our commitment is to provide a safe, positive, and intellectually stimulating learning environment that will empower students to become creative problem solvers, critical thinkers, and empathetic learners prepared for higher education and life in the twenty-first century. *With its rigorous international curriculum, modern facilities, and exceptional standardized test scores, NIS is regarded as the best international school in Chiang Mai.*

VISION



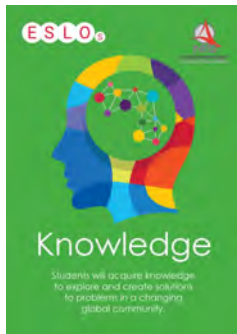
Education Through Diversity: Promote passionate, life-long learners who strive for academic excellence through a well-balanced and relevant curriculum.



MISSION

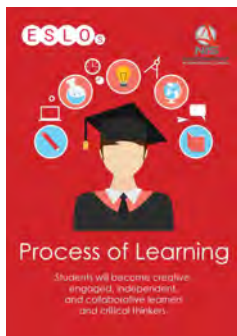
NIS will embrace diverse cultures and effectively collaborate with all stakeholders and the local community. NIS will respect the importance of inclusive relationships, built from mutual support, while nurturing engaged, confident, and empathetic students. Our goal is to develop critical thinkers, who are active and caring members of the global community.

EXPECTED SCHOOL-WIDE LEARNER OUTCOMES (ESLOs)



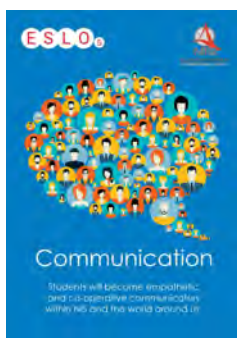
Knowledge

Students will acquire knowledge to explore and create solutions to problems in a changing global community.



Process of Learning

Students will become creative, engaged, independent, and collaborative learners and critical thinkers.



Communication

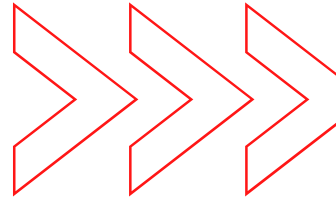
Students will become empathetic and co-operative communicators within NIS and the world around us.



Self-Understanding

Students will become confident self-reflective, and respectful learners within a diverse community.

Academic Programs



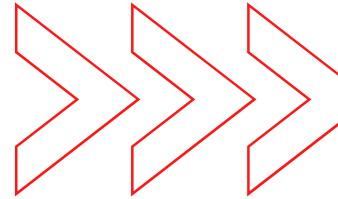
The Early Childhood Center (ECC) program provides education for Early Learners (K1), Pre-School (K2), and Kindergarten (K3) students. The instructional methods focus on developing each child's social, emotional, physical, and language confidence as they navigate through diverse learning environments within their classroom during their special courses such as Art, Music, Thai language, Physical Education, Creative Movement, and Swimming.

The Elementary School (Grade 1-5) program covers the four core subject areas of Language Arts, Mathematics, Science, and Social Studies. In addition, students receive classes in Physical Education, Art, Music, Computer Science, Thai Language & Culture, and Chinese Language. A variety of after-school clubs and sports activities are also available.

The Middle School (Grade 6-8) program focuses on preparing students for high school. The program operates on a three-day rotating schedule (A-B-C day). Each day consists of six 55-minute periods. Students take courses in the core subject areas of English Language Arts, Mathematics, Science, and Social Science. Additional courses such as Computer Science & Digital Literacy, Art, Music, Physical Education, and Thai Language & Culture also complement the curriculum. Students also have the opportunity to begin studying a World Language (Spanish, Japanese, or Chinese) in grade 7 and 8. All of these courses provide the foundation to succeed in our college-preparatory High School program.

The High School (Grade 9-12) program operates on a three-day rotating cycle (A-B-C day) with each day consisting of six 55-minute periods. The High School Curriculum is college-preparatory in nature and offers an expanding Advanced Placement (AP) program. The graduation requirements and elective course offerings ensure eligibility for entrance to universities and colleges around the world. A High School diploma, aligned with California State high school graduation requirements and the University of California Admission Requirements is awarded to students upon completion of all NIS graduation requirements.

STUDENT ASSESSMENT DATA



MAP 'Measure of Academic Progress' Data:

NIS utilizes the NWEA (Northwest Evaluation Association) Measure of Academic Progress (MAP) Test to monitor student progress. MAP assessments measure students' individual growth in Reading, Language Usage, Mathematics, and Science.

Students from Kindergarten to Grade 3 take Reading & Mathematics assessments; students from grades 3-8 additionally take Language Usage and Science assessments; students from grades 9-11 take Reading, Language Usage, and Mathematics assessments.

MAP testing is administered three-times per academic year at the Early Childhood Center (ECC), Academic Access Program (AAP), Elementary grade levels (Grade 1-5), and Middle School grade levels (Grade 6-8): Fall, Winter, and Spring. High School students take MAP assessments twice per academic year in Fall and Spring.

MAP assessment data consistently indicates that NIS students exceed international averages across grade levels in all content areas. The school's most recent school-wide assessment window is Winter 2021. This data is presented below.

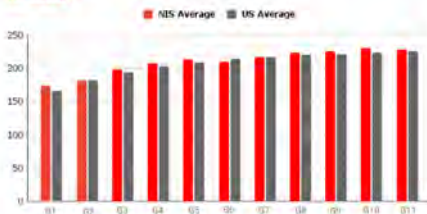
Nakornpayap International School NWEA RIT Comparisons to US Norms



Nakornpayap International School NWEA RIT Comparisons to US Norms

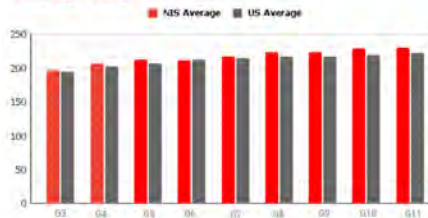


Winter 2021 NWEA MAP RIT Scores
Reading



READING		
Grade	NIS	US Average
1	174	166
2	182	181
3	198	194
4	208	203
5	213	209
6	210	214
7	217	217
8	223	220
9	225	221
10	230	223
11	228	225

Winter 2021 NWEA MAP RIT Scores
Language Usage



LANGUAGE		
Grade	NIS	US Average
3	197	195
4	207	203
5	213	208
6	212	213
7	218	215
8	223	218
9	223	218
10	229	220
11	230	222

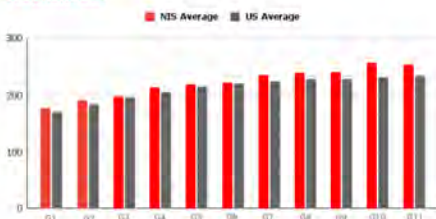
Nakornpayap International School NWEA RIT Comparisons to US Norms



Nakornpayap International School NWEA RIT Comparisons to US Norms

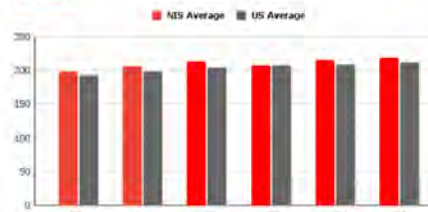


Winter 2021 NWEA MAP RIT Scores
Mathematics



MATH		
Grade	NIS	US Average
1	177	170
2	191	184
3	197	196
4	214	206
5	219	215
6	222	220
7	235	224
8	240	228
9	241	229
10	257	231
11	254	234

Winter 2021 NWEA MAP RIT Scores
Science



SCIENCE		
Grade	NIS	US Average
3	199	193
4	206	199
5	213	204
6	208	207
7	215	209
8	219	212

Advanced Placement (AP) Data:

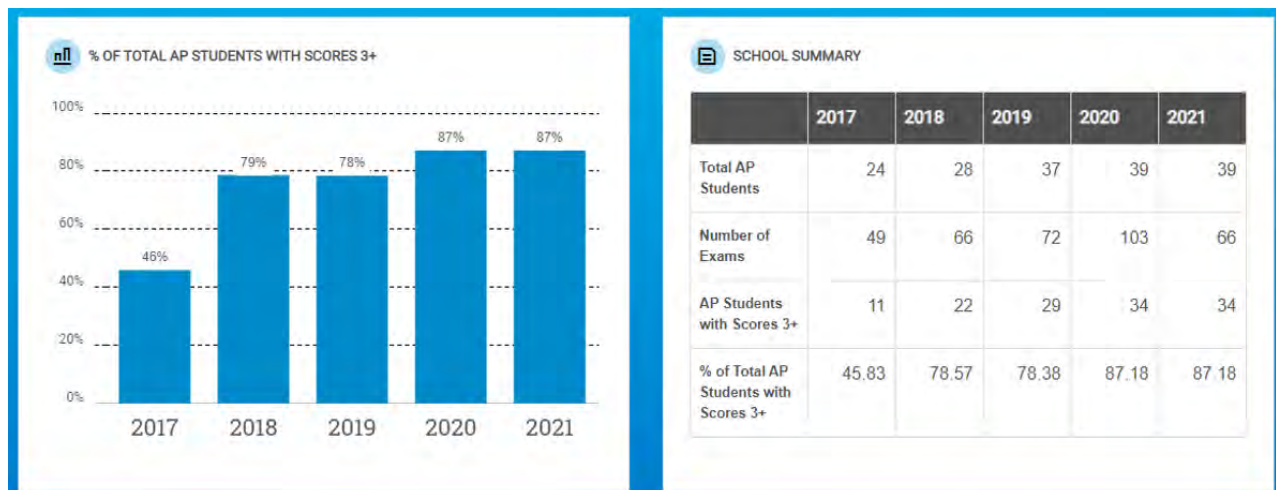
The AP program is administered by the College Board to promote college readiness. The AP courses and exam scores are objective measures to assess high school students and permit them to bypass, and in some cases gain credit for, introductory college courses. In this sense, AP exams are a recognized standard across the world and an integral part of the admissions decisions for many colleges and universities. The external exams are administered in May of each academic year, with the scores released in July. Scoring is on a 1-5 scale, with a passing score considered to be 3 or higher, and a maximum score of 5.

NIS currently offers **14 AP courses** in its High School program:

- AP Capstone: Seminar, Research
- AP English: English Language & Composition
- AP Social Sciences: Microeconomics, Psychology, World History, Comparative Government
- AP Mathematics: Calculus AB, Statistics
- AP Sciences: Biology, Chemistry, Physics 1
- AP Computer Science: Computer Science Principles
- AP Arts: Studio Art

The AP courses at NIS are designed to be equivalent to general introductory college courses with respect to the range and depth of topics covered, the kinds of textbooks used, the kinds of laboratory work done by students, and the time and effort required of students.

Five-Year AP Scores Summary:



Despite the impact of COVID-19, NIS students continue to maintain an increase in the overall pass rate as evidenced in the five-year summary data above.

SAT Data (Scholastic Aptitude Test):

NIS is an approved SAT Testing Center:
<https://collegecounseling.nis.ac.th/psat-sat>

The SAT is an entrance exam used by colleges and universities to make admissions decisions. The purpose of the SAT is to measure a high school student's readiness for college, and provide colleges with one common data point that can be used to compare all applicants. NIS student data for the three most recent test dates is shown below:

SAT October 2020, All grades - Scores & Benchmarks

Total Score/Section Scores

Group	Number of Test Takers	Total Score 320-1520	ERW Score 160-760	Math Score 160-760
School	10	991	457	534
District	0	N/A	N/A	N/A
State	0	N/A	N/A	N/A
Total Group	115,665	919	462	457

SAT December 2020, All grades - Scores & Benchmarks

Total Score/Section Scores

Group	Number of Test Takers	Total Score 400-1600	ERW Score 200-800	Math Score 200-800
School	17	1091	482	608
District	0	N/A	N/A	N/A
State	0	N/A	N/A	N/A
Total Group	180,715	1154	571	583

SAT March 2021, All grades - Scores & Benchmarks

Total Score/Section Scores

Group	Number of Test Takers	Total Score 400-1600	ERW Score 200-800	Math Score 200-800
School	10	1101	504	597
District	0	N/A	N/A	N/A
State	0	N/A	N/A	N/A
Total Group	225,505	1163	578	585

NIS Graduates truly go all over the world!



United States

Albright College *
Anderson University
Baldwin Wallace University
Baylor University *
Buffalo University of Michigan *
Cabrillo College
California State University
City College of New York
City College of San Francisco
College for Creative Studies, California
Colorado State University *
Columbia College Chicago
Concordia College *
Creighton University *
De Anza College
Edinboro University
Embry-Riddle Aeronautical University *
Fashion Institute of Technology New York
Florida Institute of Technology
Florida State University *
Fullerton San Jose State University
Furman University *
Georgia State University *
Grand Valley State University
Hamilton College *
Hofstra University *
Hult International Business School
Iowa State University *
Kennesaw State University
Kent State University
King University *
Lake Forest University *
Lane Community College
Maryland Institute College of Art (MICA) *
Maryville University *
Michigan State University *
Middle Tennessee State University *
Minnesota State University *

New York School of Interior Design
New York University Institute of Technology
Northern Alberta Institute of Technology (NAIT)
Nova Southeastern University
Ohio Northern University *
Ohio State University *
Otis College of Art and Design, Georgia *
Pennsylvania State University
Purdue University *
Quinnipiac University *
Rhode Island School of Design *
Savannah College of Art and Design (SCAD)
School of Art Institute of Chicago (SAIC) *
Seton Hall University *
Southern Oregon University
St. Olaf College *
State University of New York
Temple University
Texas A&M University
The United States Air Force
The University of Arizona *
The University of Illinois *
The University of Texas Austin *
University of California, Davis; Irvine; Riverside
University of Connecticut
University of Georgia
University of Massachusetts Boston
University of Minnesota Twin Cities
University of North Dakota * (100% scholarships)
University of San Francisco
University of Southern Oregon
University of Utah
The University of Wisconsin *
Vanderbilt University *
Wesleyan University
Western Michigan University *
Whitworth University, Washington
Youngstown State University - full athletic scholarship offer *

(* scholarship offers)

NIS Graduates truly go all over the world!



Sweden

Jönköping University

Germany

ICN Business School

Italy

University of Bologna

Netherlands

Erasmus University Rotterdam

Fontys University of Applied Science

Hanze University

Maastricht University

Maastricht University

Radboud University

Tilburg University

University of Groningen

University of Twente

Vrije Universiteit Amsterdam

Wageningen University & Research

New Zealand

Victoria University of Wellington

Australia

Curtin University

Griffith University

La Trobe University

Le Cordon Bleu, Sydney

Macquarie University

McCleary University

Monash University *

Queensland University of Technology (QUT)

The University of New South Wales (UNSW Sydney)

University of Adelaide

University of Canberra

University of Melbourne

University of Newcastle

University of Queensland

University of Sydney

The University of Technology Sydney *

The Blue Mountains International Hotel Management School

Canada

ABrescia University College

Carleton University

Fanshawe College

Northern Alberta Institute of Technology (NAIT)

Queen's University

Ryerson University Algoma University

Simon Fraser University

The Humber College *

University of Alberta

University of British Columbia

University of Toronto

Waterloo University

United Kingdom

King's College London

Leeds Arts University

London College of Fashion

Middlesex University

Northumbria University

University College Birmingham

University of Bristol

University of Chester

University of Essex

University of Greenwich, London

University of Manchester

University of Northumbria

University of South Hampton

University of Surrey

University of Westminster, London

Waterford Institute of Technology *

Dublin Business School

Dublin Institute of Technology

China

Beijing Foreign Studies University

Donghua University

Duke Kunshan University *

Jiangsu University, Clinical Medicine (MBBS)

Soochow University

Zhejiang University (Medical Sciences)

Korea

Chung-Ang University

Dong Guk University

Dongguk University

Korea National University of Arts

Kyunghee University

Kyungpook National University

Seoul Institute of the Arts

Sogang University

Sungkyunkwan University

SUNY Korea

(* scholarship offers)

NIS Graduates truly go all over the world!

Japan

Nagoya University
Ritsumeikan Asia Pacific University
Sophia University
Tokyo International University
Waseda University

Hong Kong

Lingnan University
The Chinese University Hong Kong – (Juris Doctor Program)
The City University of Hong Kong - full tuition scholarship offer *
The Hong Kong Polytechnic University

Taiwan

Ming Chuan University
National Cheng Kung University
National Chengchi University
National Chiao Tung University (NCTU)
National Taipei University
National Taiwan University (NTU)
National Tsing Hua University

Thailand

Asian University of Science and Technology
Assumption University
Assumption University
Bangkok University International College
Chiang Mai University International College
Chulalongkorn University
King Mongkut's Institute of Technology Ladkrabang
King Mongkut's University of Technology Thonburi (KMUTT)
Mae Fah Luang University
Mahidol University Conservatory of Music
Mahidol University International College
Payap University
Rangsit University Medical College
Sirindhorn International Institute of Technology
Stamford International University
Thammasat University International College
The British College, Sripatum University
Vatel School of International Hospitality Management
Webster University Thailand

Others

Ateneo de Davao University, Philippines
SP Jain School of Global Management
International Hotel School - Cape Town, South Africa
University of Cape Town, South Africa
Moscow State University, Russia
Estonian Academy of Music and Theatre (EAMT)
Sharda University, India (School of Dental Sciences: SDS)

(* scholarship offers)

CLASS OF 2021



NIS is grateful to all these universities for accepting our graduates and offering them these opportunities.

The United Kingdom

King's College London
University of Bristol
University of East Anglia
University of Manchester
University of New Castle

China

Shanghai Jiao Tong University

The Netherlands

Maastricht University
Radboud University
University of Groningen
Vrije University

Malaysia

University of Technology

Australia

Australia National University
Monash University
Royal Melbourne Institute of Technology
University of Melbourne

The United States of America

ArtCenter College of Design
Boston University,
Concordia University Irvine,
Concordia University of Illinois
DePaul University
George Mason University
Hofstra University
Illinois Institute of Technology
Manhattan College
Maryland Institute College of Arts
New York University
Ohio State University
Saint Leo University
Savannah College of Art and Design
School of the Art Institute of Chicago
School of Visual Arts, New York,
Stony Brook University
The Ohio State University
University of California, Davis
University of California, Irvine
University of California, Irvine
University of California, Merced
University of California, Riverside
University of California, Santa Cruz
University of Illinois at Chicago
University of Minnesota, Twin Cities
University of Toronto - St. George
University of Washington
University of Washington, Seattle

Thailand

Chiang Mai University
Chulalongkorn University
Kasetsart University
King Mongkut's University of Technology
Mahidol University International College
Payap University

Canada

Centennial College
McGill University
Queen's University
Trinity Western University
University of Alberta
University of Toronto
York University

South Korea

Chung-Ang University
Handong Global University
Inha University
Korea Aerospace University
Korea National University
Soongsil University
Sungkyunkwan University
Yonsei University

Taiwan

National Cheng Kung University

Hong Kong

Hong Kong Metropolitan University
Hong Kong Shue Yan University
Lingnan University



Contact

NIS is conveniently located on Second Ring Road, in the north of Chiang Mai City.

Our campus is easy to reach. From Chiang Mai City Hall, our campus is a three-minute drive or a ten-minute walk.



GPS Coordinates

N 18° 50.48.98, E 098° 59.26.95

Nakornpayap International School
240 Moo 6, San Phi Sua
Muang, Chiang Mai 50300



www.nis.ac.th



053 110 680



info@nis.ac.th